

**MARRI MEMBER STATES  
COMPARATIVE TABLE FOR VISA STATISTICS  
2008**

	<b>Albania</b>	<b>Bosnia and Herzegovina</b>	<b>Croatia</b>	<b>Macedonia</b>	<b>Montenegro</b>	<b>Serbia</b>
<b>Requested visas</b>	2.593		110.753	26.250	4.069	
<b>Granted visas</b>	2.348	10.139	108.534	25.974	3.593 16.342 (border -transit)	56.171
<b>Denied applications for visas</b>	82	59	2.216	235	476	
<b>By type<sup>1</sup></b>	A – 0; B - 33; C - 1337; D - 666;	A; B; C Since May 2008	B - 44.004 C - 64.427	B - 5.226 C - 21.179 D - 122	Transit (B) Travel (C)	Transit Tourist pass entry visa entry exit visa
<b>By the country where DCP's are posted</b>	See annex I		See annex I	See annex I	See annex I	See annex I
<b>Place of issuance</b>	Border crossing points – 569 <sup>2</sup> ; 104 <sup>3</sup>	Border crossing points - 684		Diplomatic-consular missions	1) Diplomatic-consular missions 2) Border	
<b>Citizenship of applicants</b>	See annex II	See annex II			See annex II	See annex II
<b>Purpose of travel</b>	Tourism, Work, Residency, Transit, Accreditation, etc		Tourism Transit Business	Visits of relatives, business, official visits, tourism, work permits, studying, volunteering	Transit Tourism Business	
<b>Type of travel documents</b>	Passports		Ordinary passport	Ordinary, national, diplomatic, official and foreigners passports	Ordinary passport, EU travel documents	

<sup>1</sup> Data referring types of visas from B&H, Montenegro and Serbia for 2008 are incomparable with other MMS due to the different classification of types of visas (by old laws).

<sup>2</sup> Visas issued on border crossing points to foreign sailors that ask permission to embark or disembark, to return to their country after labour contracts expire, and in case of change of crew for the period from 01.01.2009 until 09.30.2009

<sup>3</sup> Visas issued on border crossing points by request of the Ministry for Foreign Affairs, when state interests and international obligations compel

<b>Visa fees<sup>4</sup></b>	Reciprocity		35 EUR 71 EUR-urgent fee	22 EUR (single entry - exit, transit) 28 EUR (two entry - exit); 38 EUR (multi, business, employment) Additional 15 EUR for urgent fee, reciprocity with Moldova, Russia and Former USSR states	22 EUR - DCM 55 EUR - border	
<b>Representation of a state by another one in countries where the first state has no diplomatic mission and consular service</b>	None			None	Republic of Serbia, Republic of Bulgaria (Armenia, Azerbaijan Georgia, Moldova, Kazakhstan)	

### ANEX I

	<b>Albania</b>	<b>Bosnia and Herzegovina</b>	<b>Croatia</b>	<b>Macedonia</b>	<b>Montenegro</b>	<b>Serbia</b>
<b>By countries/ Diplomatic representation</b>	ANKARA – 28 ATHENS - 80 BARI - 6 BELGRADE - 772 BERLIN - 42 BRUSSELS - 6 BEIJING - 497 BUCHAREST - 20 BUDAPEST - 15 BERNE - 13 BUENOS AIRES - 26 CAIRO – 198 COPENHAGEN - 5		KIEV - 25.095 LJUBLJANA - 5.337 MOSCOW - 6.626 STUTTGART - 5.406 TIRANA - 11.795 TRIESTE - 5.601	ANKARA - 73 ATHENS/LO- 823 BELGRADE - 300 BERLIN – 66 BERN - 140 BRUSSELS - 63 BEIJING – 174 BUCHAREST - 461 BUDAPEST - 223 BONN - 239 CAIRO - 145 COPENHAGEN - 67 CANBERRA – 1.979	ALBANIA, AUSTRIA, BELGIUM, BIH, CROATIA, CHINA, FRANCE, GERMANY, GREECE, HUNGARY, ITALIA, MACEDONIA, RUSSIAN	<b>ALBANIA – 1.694</b> <b>ALGERIA - 188</b> <b>ANGOLA - 70</b> <b>ARGENTINA – 19</b> <b>AUSTRALIA</b> CANBERRA - 7 SYDNEY/GK - 198 <b>BELORUSSIA – 7</b> <b>BELGIUM – 195</b> <b>BH</b> SARAJEVO - 498 BANJA LUKA – 53

<sup>4</sup> Visa fees differ due to the different classification of types of visas (by old laws), place of issuance, urgency and different bilateral agreements between countries, etc.

	<p>HAGUE - 10  ISTANBUL - 103  JANINE - 2  KUALA LUMPUR - 27  LONDON – 68  LJUBLJANA - 38  MADRID - 13  MOSCOW - 194  MILANO - 52  NEW DELHI - 53  NEW YORK - 27  OTTAWA - 7  PARIS - 30  PRAGUE - 12  PODGORICA - 115  PRISTINE - 18  RIYADH - 146  ROME - 116  SOFIA - 5  STOCKHOLM - 11  SKOPJE - 34  THESSALONIKI - 8  TEL AVIV - 4  VIENNA - 15  WASHINGTON - 122  WARSAW - 22  ZAGREB - 225</p>			<p>DOHA - 34  DETROIT/GK – 100  HAGUE – 77  ISTANBUL - 395  OTTAWA - 1  KIEV – 2.003  LONDON - 188  LJUBLJANA -14  MADRID - 23  MOSCOW - 1.839  MUNICH/GK - 50  MELBOURNE/GK - 1.101  PARIS - 155  PRAGUE - 30  PODGORICA - 27  PRISTINA/LO – 1.861  ROME - 19  SARAJEVO - 15  SOFIA – 984  STOCKHOLM - 39  TIRANA – 12.905  TORONTO/GK- 7  THESSALONIKI/LO - 918  VIENNA – 161  VENICE/GK- 5  WASHINGTON - 106  WARSAW - 43  ZAGREB - 23</p>	<p>FEDERATION,  SLOVENIA,  SERBIA,  SUISSE  CONFEDERATION,  UK,  GENERAL  CONSULATES –  FRANKFURT AND  NEW YORK</p>	<p><b>BRASIL – 775</b>  <b>BULGARIA – 355</b>  <b>CHINA</b>  BEIJING - 449  SHANGHAI/GK – 2.486  <b>CROATIA</b>  VUKOVAR/GK - 44  ZAGREB - 131  RIJEKA/GK – 15  <b>CZECH REPUBLIC – 102</b>  <b>CYPRUS – 26</b>  <b>CUBA – 56</b>  <b>CANADA</b>  OTTAWA - 11  TORONTO/GK - 16  <b>DENMARK – 218</b>  <b>EGYPT – 197</b>  <b>ENGLAND – 456</b>  <b>ETHIOPIA – 17</b>  <b>FRANCE</b>  LION – 90  STRASBOURG/GK - 29  PARIS – 184  <b>GREECE</b>  ATHENS – 245  THESSALONIKA/GK - 55  <b>GERMANY</b>  BERLIN - 273  DUESSELDORF/GK - 138  MUNICH/GK – 479  HAMBURG/GK - 47  STUTTGART/GK – 191  <b>HUNGARY – 712</b>  <b>ISRAEL – 39</b>  <b>INDIA – 703</b>  <b>INDONESIA – 361</b>  <b>IRAN – 731</b>  <b>IRAQ – 187</b>  <b>ITALY</b>  ROME - 121  MILANO/GK – 77  TRIESTE/GK - 40  <b>JAPAN – 14</b>  <b>KENYA – 74</b>  <b>KUWAIT – 344</b>  <b>LIBYA – 953</b>  <b>MACEDONIA – 500</b>  <b>MOROCCO – 50</b></p>
--	---	--	--	---	---	---

						<b>MEXICO – 43</b> <b>MYANMAR – 18</b> <b>NIGERIA – 145</b> <b>NORWAY – 172</b> <b>NETHERLANDS – 205</b> <b>POLAND – 186</b> <b>PERU – 36</b> <b>PORTUGAL – 22</b> <b>ROMANIA</b> BUCHAREST - 153 TEMIŠVAR/GK - 101 <b>RUSSIAN FEDERATION</b> – 1.725 <b>SOUTH AFRICAN</b> <b>REPUBLIC – 925</b> <b>SWITZERLAND</b> BERN – 127 ZURICH – 81 <b>SPAIN – 88</b> <b>SLOVAKIA – 15</b> <b>SYRIA – 637</b> <b>TUNISIA – 5</b> <b>TURKEY</b> ANKARA – 10.339 (95 % THREE MONTHS TRANSIT VISAS) ISTANBUL – 19.991 <b>UKRAINE – 7.632</b> <b>USA</b> WASHINGTON - 98 CHIKAGO - 172 <b>ZAMBIA – 13</b>
--	--	--	--	--	--	---

## ANEX II

	<b>Albania</b>	<b>Bosnia and Herzegovina</b>	<b>Croatia</b>	<b>Macedonia</b>	<b>Montenegro</b>	<b>Serbia</b>
<b>by citizenship of applicants</b>	Serbia – 772 China – 526 B&H – 332 Egypt – 178 Russia – 176 India - 104	Lebanon – 1.786 Albania – 1.638 Ukraine – 921 Belorussia – 900 Mexico – 488 Serbia (UNMIK) – 402		N/A	transit – 95% Albanian from Kosovo, Turkey Dcm – Russia	China - 3.038 Albania - 523 Lebanon - 425 unknown 394 India - 356

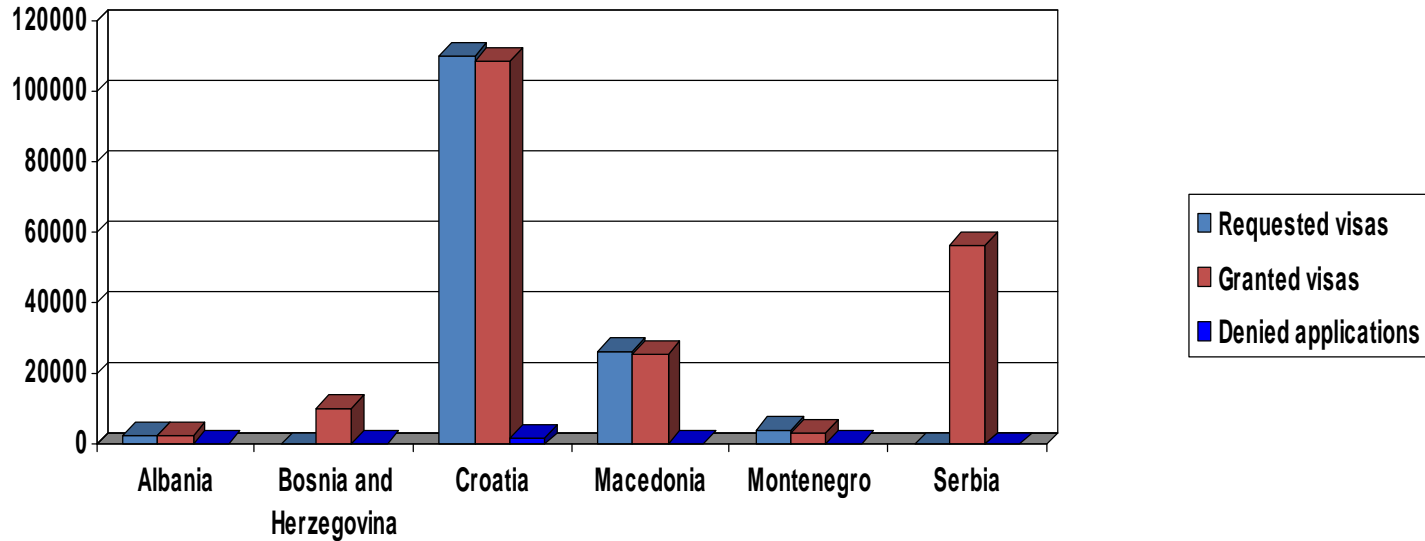
	Moldova - 86 USA - 84 Saudi Arabia - 64 Belorussia - 44 Philippines - 39 Iran - 38 Pakistan - 30 Greece - 29 South Africa - 28 Italy - 26 Colombia - 25 Germany - 23 Georgia - 23 Jordan - 23 Morocco - 23 Azerbaijan - 22 Afghanistan - 2 Algerian - 7 England - 2 Armenia - 5 Austria - 3 Bahrain - 2 Bangladesh - 7 Costa Rica - 1 Dominican Rep - 4 Ecuador - 11 United Arab Emirates - 6 Eritrea - 1 Ethiopia - 1 France - 6 Ghana - 2 Guatemala - 6 Hong Kong - 5 Holland - 2 Indonesia - 3 Iraq - 14 Iceland - 1 Japan - 3 Yemen - 5 Cameroon - 5 Qatar - 6 Kazakhstan - 6 Kenya - 5 Kyrgyzstan - 14 Cuba - 10 Kuwait - 18 Nigeria - 10 Other citizenship - 99	Indonesia - 264 Iran - 250 Egypt - 225 Brazil - 213 India - 212 China - 211 Argentina - 209 Bulgaria - 122 Romania - 6 Other citizenship - 2.292				Germany - 343 Iraq - 300 Syria - 264 Iran - 252 Nigeria - 244 Turkey - 196 Taiwan - 188 Jordan - 175 South African Republic - 168  Algiers - 149 Moldova - 148 Pakistan - 135 Palestine - 105 stateless - 118 Italy - 98 Philippines - 93 France - 83 Egypt - 81 Kazakhstan - 81 Macedonia - 75 USA - 71 B&H - 70 Morocco - 70 Brazil - 68 Switzerland - 65 Thailand - 62 Georgia - 60 Kenya - 55 Greece - 48 Montenegro - 47 Rumania - 46 Bulgaria - 46 Ukraine - 46 Russian Federation - 45 Spain - 44 Ivory Coast - 43 Belgium - 42 Croatia - 40 Cameron - 39 Indonesia - 38 Tunis - 36
--	--	---	--	--	--	---

						Ghana - 35 Uzbekistan - 34 Austria - 32 Azerbaijan - 31 Vietnam - 29 Malaysia - 28 Australia - 23 Peru - 22 Netherlands - 22 Armenia - 21 Hungary - 21 Sri Lanka - 21 Congo dr - 20 Libyan Jamahiriya - 18 Bangladesh - 17 Dominican republic - 16 Burundi - 12 Denmark - 11 Angola - 9 Afghanistan - 9 Czech republic - 8 Argentina - 3 Bahamas - 2 Bahrain - 1 Belorussia - 6 Benin - 4 Botswana - 3 Bolivia - 3 Brunei - 2 Burma - 5 Chad - 1 Chile - 2 Ecuador - 5 Equatorial guinea - 1 Estonia - 4 Ethiopia - 12 Finland - 5 Gabon - 10 Gambia - 4 Upper Volta - 3 Guatemala - 3 Guinea - 9
--	--	--	--	--	--	--

						Guinea Bissau - 3 Haiti - 2 Honduras - 1 Honking - 5 Ireland - 2 Iceland - 1 Israel - 11 Jamaica - 5 Japan - 7 Yemen - 2 Cambodia - 1 Canada - 14 Qatar - 7 Cyprus - 4 Kirgizstan - 7 Columbia - 14 Korea - 11 Costa Rica - 3 Cuba - 7 Kuwait - 12 Laos - 2 Latvia - 1 Lesotho - 1 Liberia - 4 Lithuania - 2 Luxemburg - 1 Malawi - 2 Mali - 9 Malta - 3 Mauritania - 1 Mexico - 9 Mongolia - 14 Mozambique - 3 Namibia - 1 Nepal - 3 Niger - 5 Nicaragua - 4 Norway - 14 New Zealand - 3 Oman - 4 Panama - 7 Poland - 8 Portugal - 10
--	--	--	--	--	--	--

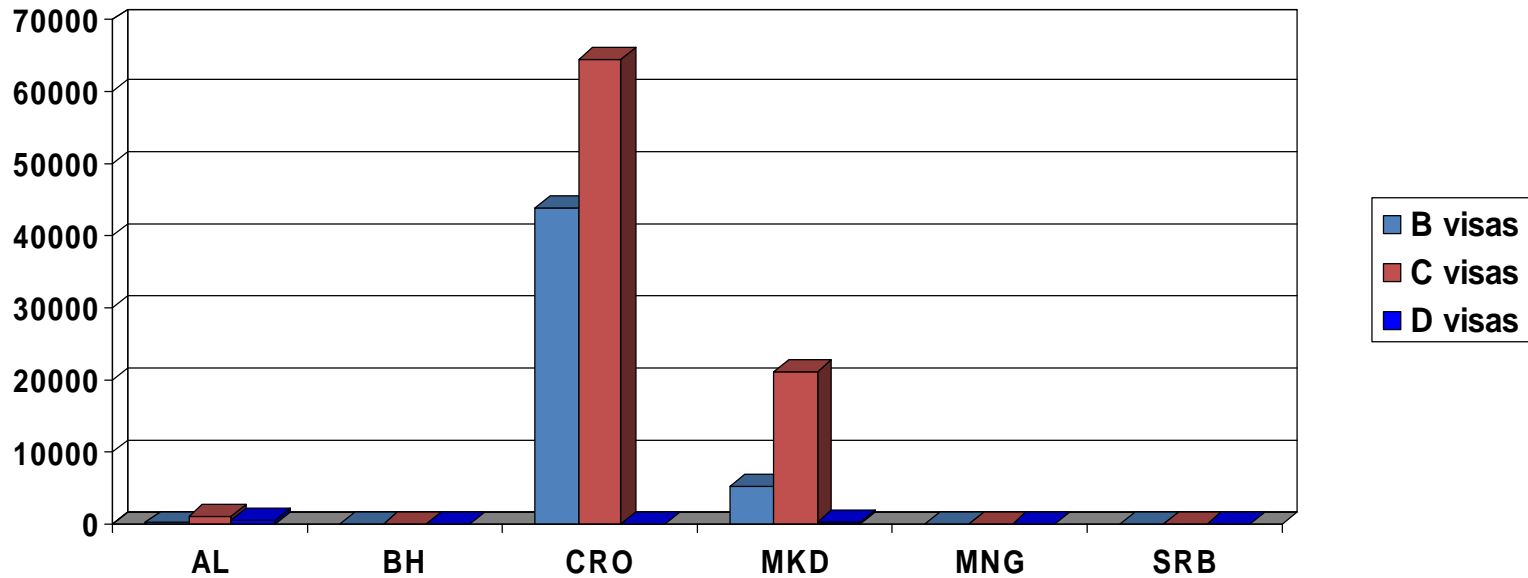


## Requested, granted visas and denied applications for visas by MARRI MEMBER STATES



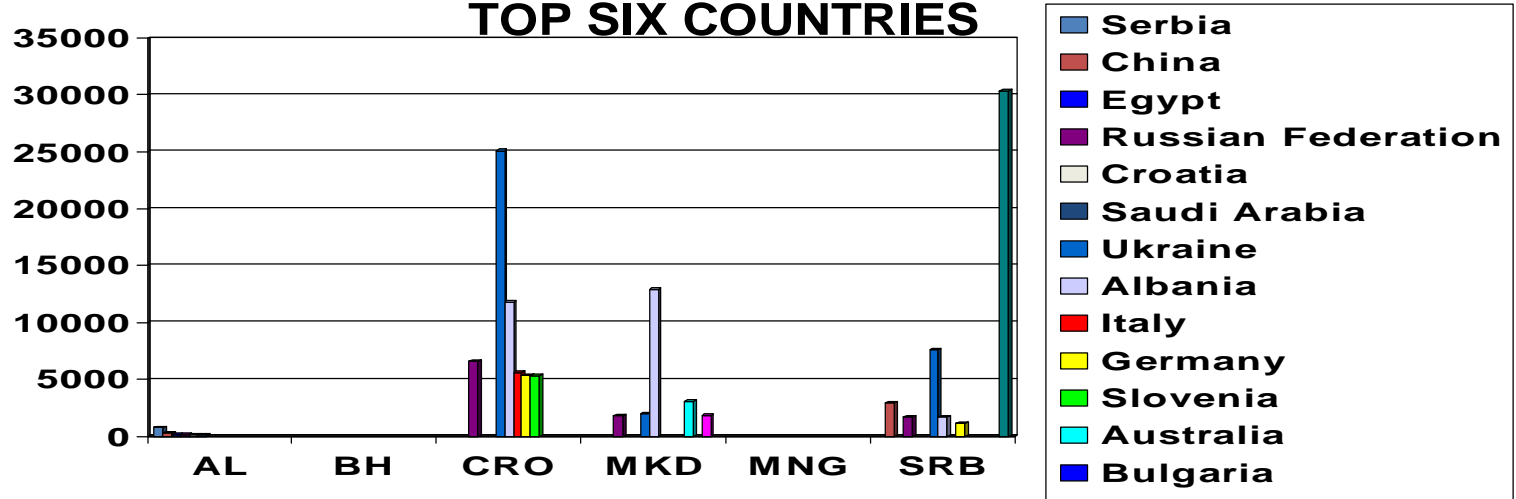
	Albania	Bosnia and Herzegovina	Croatia	Macedonia	Montenegro	Serbia
<b>Requested visas</b>	2.593		110.753	26.250	4.069	
<b>Granted visas</b>	2.348	10.139	108.534	25.974	3.593 16.342 transit	56.171
<b>Denied applications</b>	82	59	2.216	235	476	

# TYPES OF VISAS



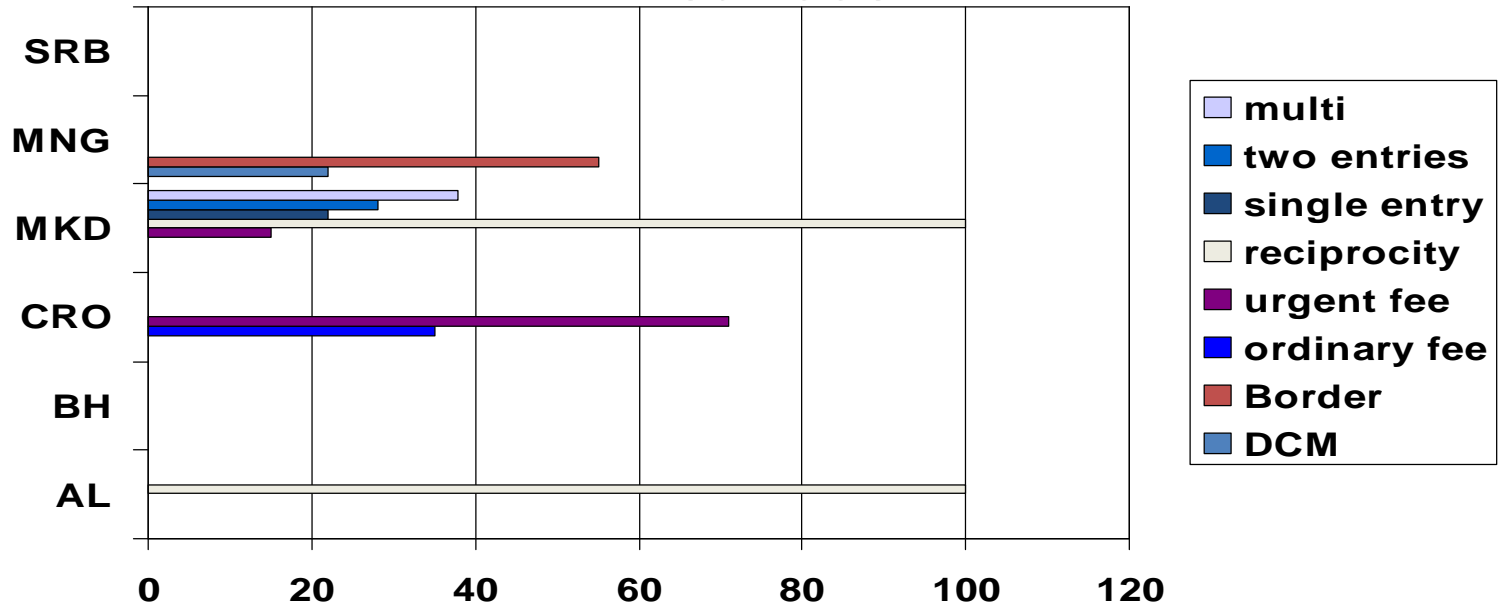
	Albania	Bosnia and Herzegovina	Croatia	Macedonia	Montenegro	Serbia
<b>B visas</b>	23		44.004	5.226		
<b>C visas</b>	960		64.427	21.179		
<b>D visas</b>	437			122		

## GRANTED VISAS BY MARRI MEMBER STATES DIPLOMATIC and CONSULAR MISSIONS TOP SIX COUNTRIES



Albania	Bosnia and Herzegovina	Croatia	Macedonia	Montenegro	Serbia
BELGRADE – 762 BEIJING – 343 CAIRO – 171 MOSCOW – 165 ZAGREB – 163 RIYADH - 121		KIEV - 25.095 TIRANA - 11.795 MOSCOW -6.626 TRIESTE - 5.601 STUTT GART - 5.406 LJUBLJANA - 5.337	TIRANA – 12.905 KIEV – 2.003 CANBERA – 1.979 PRISTINA – 1.861 MOSCOW – 1.839 MELBOURNE/GK - 1.101		TURKEY – 30.330 (95 % 3 month transit visas) UKRAINE –7.632 CHINA – 2.935 RUSSIA – 1.725 ALBANIA – 1.694 GERMANY - 1.128

# Visa fees



	Albania	Bosnia and Herzegovina	Croatia	Macedonia	Montenegro	Serbia
<b>DCM</b>				22 EUR (single entry, transit); 28 EUR (two entries); 38 EUR (multi, business, employment)	22 EUR	
<b>Border</b>					55 EUR	
<b>Ordinary fee</b>			35 EUR	See DCM		
<b>Urgent fee</b>			71 EUR	Additional 15 EUR		
<b>Reciprocity</b>	reciprocity			Moldova, Russia and Former USSR states		